


System Requirements of WBRS

- | | |
|------------------|--|
| Operating system | <ul style="list-style-type: none">• Windows 10 (32-bit or 64-bit)• Windows 8.1 (32-bit or 64-bit)• Windows 7 with SP1 (32-bit or 64-bit) |
| Web browser | <ul style="list-style-type: none">• Internet Explorer 11 |
| Java runtime | <ul style="list-style-type: none">• Java SE Runtime Environment 8 (Only required for application signing) |

Additional Settings in Internet Explorer (IE) 11

1. The WBRS website (<https://wbrs.emsd.gov.hk>) must be added to the “Trusted Sites”
2. The WBRS website must NOT include in the “Compatibility View Setting” in IE 11

The screenshot shows a web browser window with the title bar '機電工程署 EMSD EMSD (Regulatory Services) Web-Based Registration Services' and an 'Exit X' button. Below the title bar is a header 'Checking for configuration of your computer'. A red warning icon is visible. A message box states: 'Your browser is not supported by our online service. Please use one of the browser mentioned in <http://wbrsdevapp01.emsd.hksarg/psps/en/System/SystemRequirement.jsp>.' Below this, a configuration table is displayed:

Operation System	: Windows Vista
Browser	: Internet Explorer (7.0) 
Java Enabled	: No
Java Vendor and Version	: Unknown Java Vendor and Version
JavaScript Enabled	: Yes
Cookie Enabled	: Yes

At the bottom right of the configuration box is a button labeled 'Go To EMSD'. At the bottom left of the page are links for 'Privacy Policy' and 'Disclaimers'.

Figure 1. Checking configuration of your computer showing that the requirement for using WBRS cannot be fulfilled

Installation of Java

Java can be downloaded from the Java official website at <https://www.java.com>



Figure 2. Java official website

System Requirement of WBRS

The Java download page will provide the recommended version to be installed. Follow the instructions on the page to download the recommended version.

The screenshot shows the Java download page for Windows. The browser address bar shows the URL <https://www.java.com/>. The page header features the Java logo and a search bar. The main content area is titled "下載 Windows 專用的 Java" and recommends "Version 8 Update 161 (檔案大小: 1.78 MB)" with a release date of "2018 年 1 月 16 日". A large red button labeled "同意並開始免費下載" is prominent. Below the button, a warning states: "下載 Java，即表示您確認已閱讀並接受 [一般使用者授權合約](#) 的條款". A note with a lightbulb icon says: "完成 Java 安裝之後，您可能需要重新啟動瀏覽器 (關閉所有瀏覽器視窗然後重新開啟) 以啟用 Java 安裝。". A sidebar on the left contains links for "說明資源", "Windows 64 位元使用者", and "難繪安裝". The footer includes the Oracle logo and various support links.

Figure 3. Java download page

System Requirement of WBRS

When download is completed, run the downloaded installer and follow the prompted instructions to complete the setup.

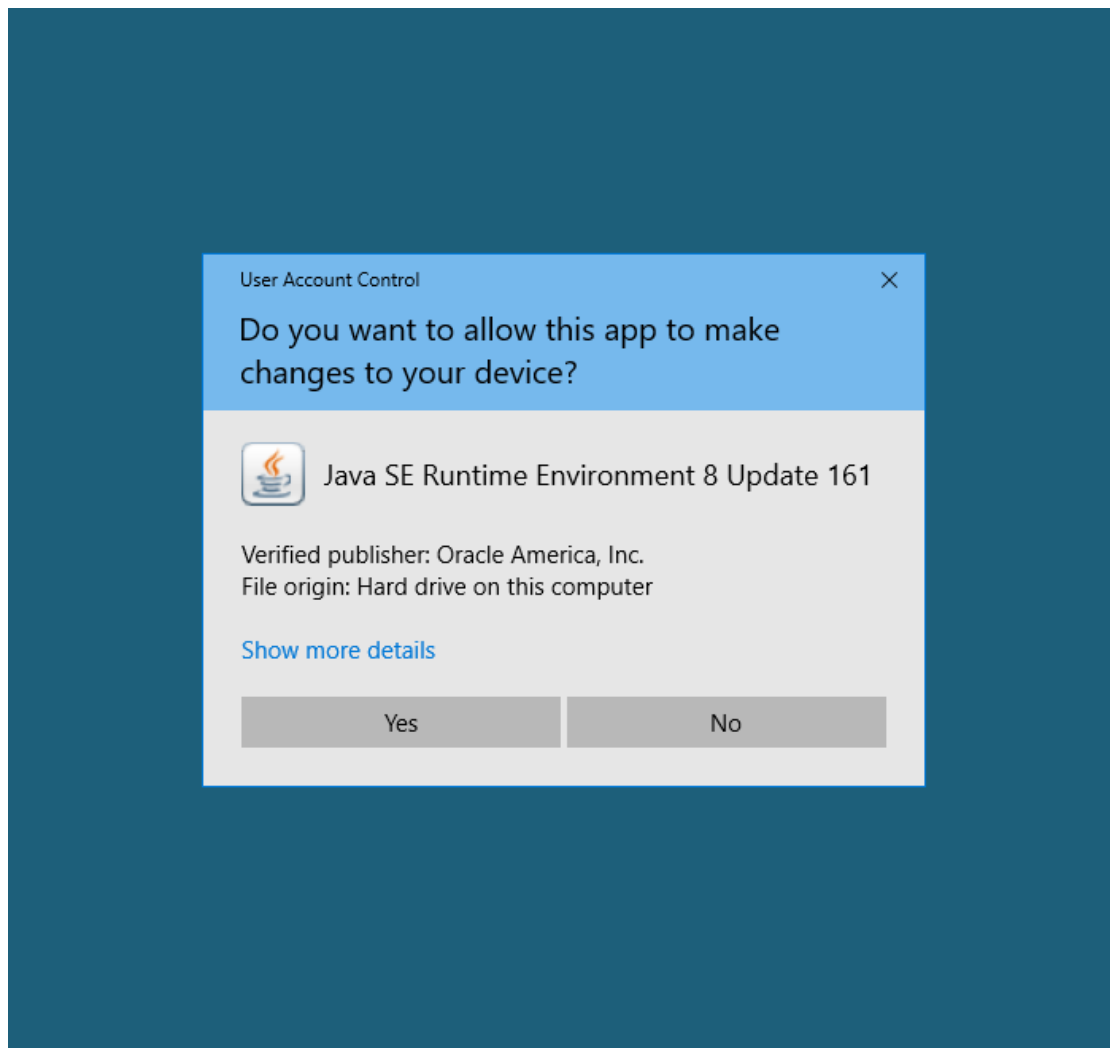


Figure 4. Setup of Java SE Runtime Environment

System Requirement of WBRS

After completing the installation, you can visit the Java website at <https://www.java.com> to verify that Java has been installed.



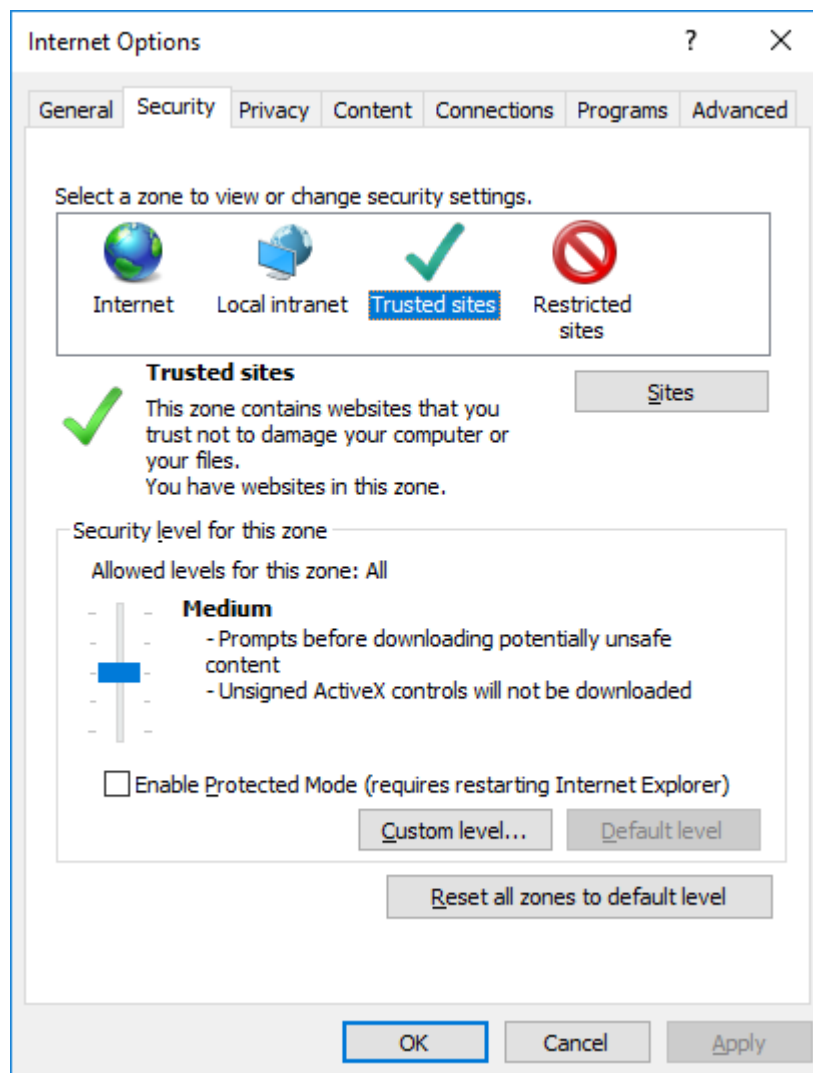
Figure 5. Verify Java page



Figure 6. Verification results for successful installation of Java Runtime

Security Settings

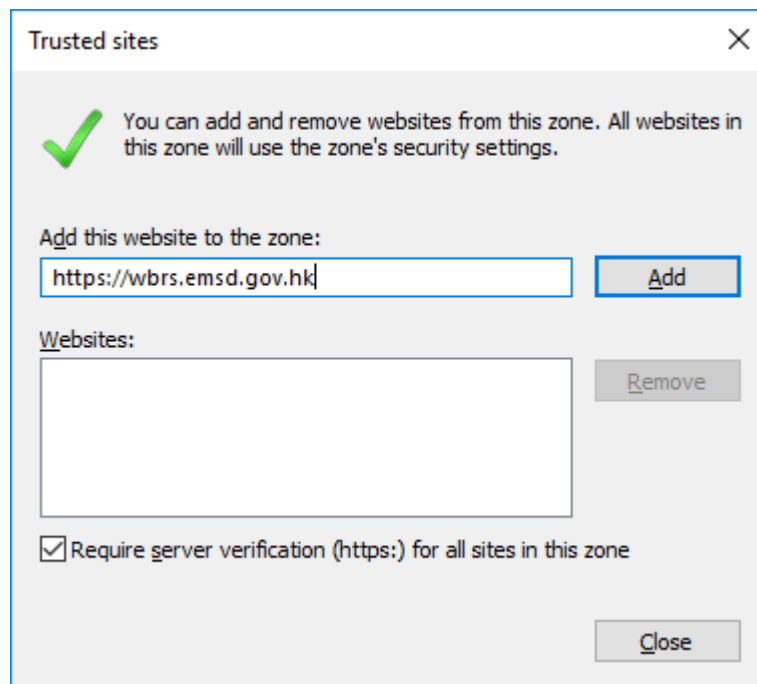
1. Under "Tools" menu of the Internet Explorer, click "Internet Options"
2. Click on the "Security Tab", select "Trusted sites"



3. Click "Sites"

System Requirement of WBRS

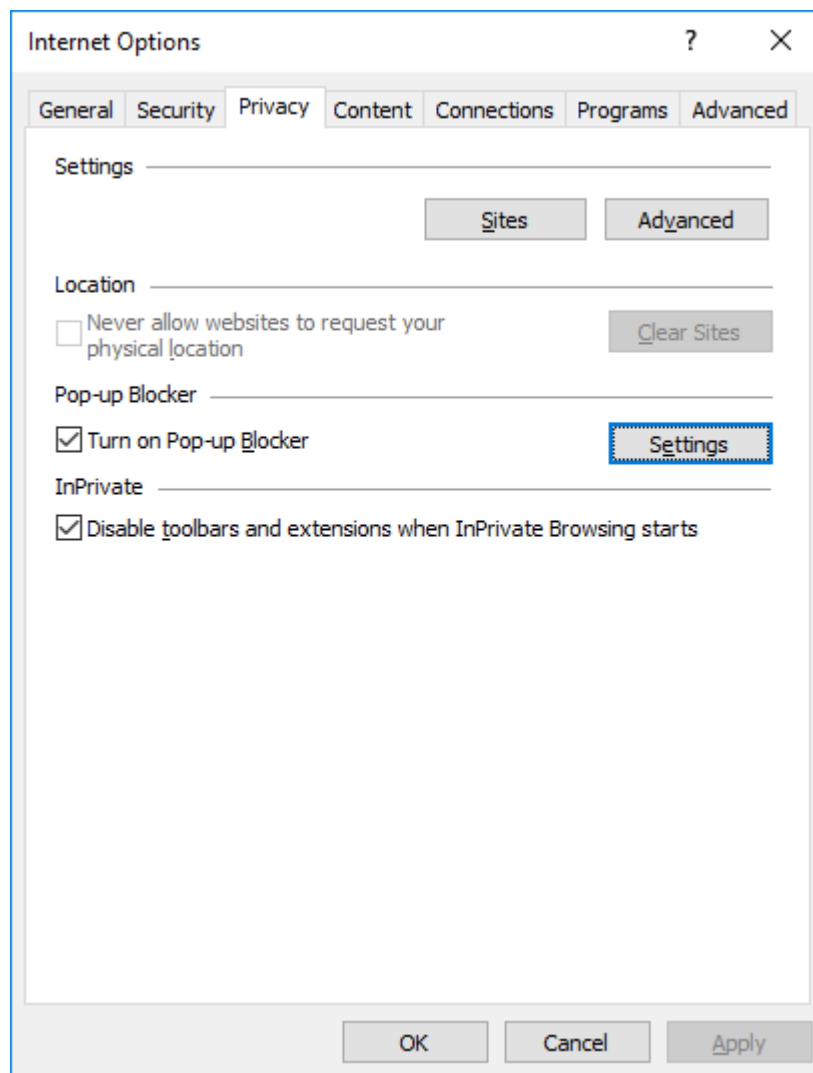
- Under "Add this website to the zone:", input "<https://wbrs.emsd.gov.hk>" and then click "Add" button



- Tick "Require server verification (https:) for all sites in this zone"
- Click "Close"
- Click "OK"

Turn off Pop-up Blocker

1. Under "Tools" menu of the Internet Explorer, click "Internet Options"
2. Click on the "Privacy"



3. Under "Pop-up Blocker", click "Settings"
4. Under "Address of website to allow:", input "wbrs.emsd.gov.hk" and then click "Add"
5. Click "Close"
6. Click "OK"